



---

# CLASP Children's Center 2006-2007 Annual Report

## Report from the Board President...

On behalf of the Board of Directors of CLASP Children's Center, it is my pleasure to present the 2006-2007 Annual Report.

CLASP is a not for profit agency and is required to have a Board of Directors. CLASP has been identified as a model center for children of working and single parent families. Our center is funded by tuition and contributions of its members and friends. We are a member agency of the United Community Fund of Great Neck and North New Hyde Park, Great Neck Chamber of Commerce, Great Neck Manhasset Community Child Care Partnership and Childcare Council of Nassau. The support from several of these agencies helps sustain scholarship funds for families.

CLASP rents its facilities from the Great Neck Public Schools with whom we work in harmony and cooperation.

CLASP continues to provide services for children, ages 18 months through 11 years

from 7:30a.m.—6:30p.m. all year long. There is breakfast Club, a full day Early Childhood Program, and an After School Program for elementary school pupils.

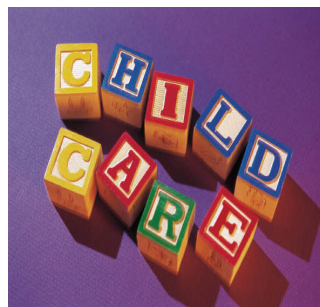
CLASP continued to encourage volunteers from many sources. The children enjoy the advantage of volunteer adults, nurturing grandparents and students who help with homework, story-time and a variety of creative experiences.

CLASP is licensed by the New York State Office of Children and Family Services. Through a contract with Nassau County, childcare is provided for income eligible families at a subsidized rate.

Jodi Adler, our present Executive Director possesses the knowledge, experience, and formidable skills needed to oversee and integrate the dedicated staff of professionals necessary for the smooth operation of such a busy and productive center, serving over 130 children.

Our fiscal year operates from July 1, 2006 through June 30, 2007. This aids in budget planning as the two months of the summer program typically experience a deficit. This is hopefully counterbalanced by a surplus during the school year and allows the Board and the administration flexibility in managing the budget. Furthermore, by placing the unpredictable summer month at the beginning of the fiscal year we anticipate a more accurate projection of the income and expenses for the coming year.

(continued on page 3)



---

### Executive Director

Jodi Adler

### Board of Directors:

#### President

Ellen Andriello

#### President Emeritus

Deborah Arkus

#### Vice President

Kim Kaiman

#### Treasurer

Barbara Citron

#### Secretary

Barbara Rosenberg

#### Members at Large

Hon. Jean Celender

Naomi Feldheim

Peter Janowsky

John Ryan

#### Advisory Board

Eileen Chomlek

Barbara Leibman

Sabina Miller

Patricia O'Byrne

Elliot Rosenblatt

Karen Rubin

Jeffrey Schwartz, Esq.

#### Honorary Board

Hon. Thomas P. DiNapoli

Estelle Gellman, Ph.D.

Mary Kasindorf

Hon. May Newburger

Eve Winer, Ph.D.

Victor Fornari, M.D.

Susan Hyman, M.D.

Barbara Masry

Muriel Turk

#### Health Care Consultant

Susan Becker

---

## A Letter from the Executive Director...

CLASP is pleased to be celebrating its 31st year of providing year-round quality education and childcare to Great Neck and its surrounding communities. A strong emphasis of our programming encompasses meeting the needs of working families, enhancing the lives of the children we serve. The ongoing support we receive from our community and its leaders is significant, as we must all recognize the important role childcare plays.

Licensed by the New York State Office of Children and Family Services, CLASP remained open to children ages, 18 months through 11 years for the 2006-07 school year. Our CACFP Food Program, Health Care Consultant and well thought out staff training component, sensibly compliments state mandated guidelines. Children with special needs who

require related services such as itinerant teaching, speech, physical and occupational therapies may be accommodated at the center.

Working closely with the Great Neck Public Schools, CLASP was able to accommodate its school age children before and after their school day, during vacations and offer wrap-around summer programs.

Increasing enrichment opportunities for both our early childhood and school age programs remained a primary focus, as we coordinated a variety of music, art and movement classes with While They're Little and the Great Neck Park District.

Much of CLASP's achievements

can be attributed to the supportive relationships and tireless efforts of its dedicated staff, board members and families. They have contributed to the program in countless ways. Our Open School Night, Family Holiday Table and annual fundraising events truly support CLASP's mission of becoming a part of each child's extended family.

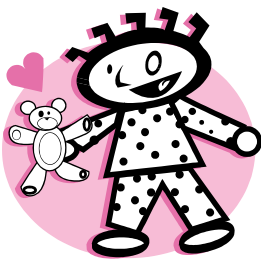
We will continue to do our best to meet the needs of working families, advocating for the importance of quality childcare.

Jodi Adler  
Executive Director



## Financially Speaking...

CLASP is a not for profit 501C3 organization, primarily supported through tuition, grants and private donations.



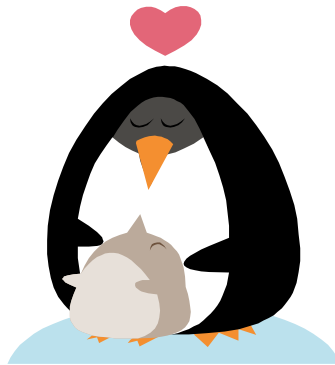
Financial contributions help support our scholarship fund and special programs for the children. Volunteers and donations of toys, books and other child centered equipment are greatly appreciated.

The Center retains a private ac-

counting firm to monitor its finances, under the guidance of the CLASP Board of Directors. Required financial documentation and tax filings are maintained on site. Audited financial statements are available upon request.

## Our Mission....

CLASP Children's Center has provided Great Neck's working parents and parents in training with quality child-care, for children ages 18 months to 11 years for over 30 years. Since its founding by working parents, the Center's mission has always been to become a part of each child's extended family. It supports all aspects of children's



growth and development in a safe nurturing environment for all social, ethnic and economic groups. The Center actively involves senior citizens, foster grandparents and high school volunteers. They help support the concept of an extended

family where children can relate to many generations and experience a unique continuity of care.

For additional information about CLASP, please call the office at 516-482-8090 or visit us on the web at [www.claspinc.org](http://www.claspinc.org).

CLASP dedicates this Annual Report in loving memory of our board member "Grandma" Edna Zelan

## President's Message continued....

The CLASP Board of Directors meets every month (for 11 months) and committees meet when necessary. We also meet with our Advisory Board.

We continued and initiated a variety of fundraising activities. These included Prestige gift-wrap, raffles, gift wrapping at Barnes and Noble, Original Works and Café Rustica. We appreciate the generous efforts of Jeffrey Phillips, the owner of Café Rustica for making this annual fundraiser possible.

Our big event of the year continues to be our annual dinner. We honor various people who tirelessly give to CLASP and support our mission. The proceeds

of the dinner continue to benefit the scholarship fund. We depend on all members of the Board to make these efforts a success.

We continue to work together to help our center meet new and exciting challenges on behalf of the future citizens of the 21st century and their families. Committees have been formed to handle the Board discretionary fund, fundraising, personnel and finances which all functioned effectively. Potential new members were identified and are being nominated for the coming year. We look forward to working with the Advisory Board to address the future needs of

CLASP. This will help us to fulfill our mission, making it possible to include all children whose parents need to work.

The entire CLASP family continues to achieve its goals and its mission. We strive to provide for all related contingencies and look forward to another productive year.



Ellen Andriello  
President



## Scholarship Opportunities and Community Giving

CLASP is proud to be able to offer scholarships to over 50% of its attending families. Out of the total CLASP enrollment (136 children):

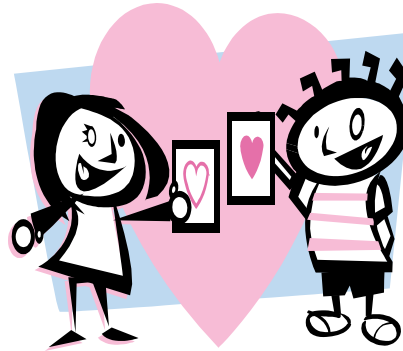
- 48% come from multi-cultural backgrounds
- 14% receive assistance from the Nassau County Department of Social Services (DSS)
- 21% come from single parent homes

Scholarship sources include: The Great Neck/North New Hyde Park United Community Fund (UCF), Leeds Foundation, Great Neck Manhasset

Community Child Care Partnership's (GNMCCCP) Dana & Jesse Lehman Fund as well as the Partnership's Zero to Three Committee. The National Council of Jewish Women's Lakeville Section, Hispanic Community of Great Neck and the Village of Great Neck Plaza also contributed to our scholarship fund.

This year Rotary donated 10 turkeys and the trimmings to families for

Thanksgiving. CLASP also participated in North Shore LIJ Health System's Adopt-A-Family program where 4 families received needed items and toys so they could celebrate the holidays. Additionally, ten CLASP families, who have children with special needs, were invited to attend the Leonard's of Great Neck's annual holiday party.



## Intergenerational Activities and Parental Involvement

CLASP's Intergenerational Program supports the idea of being able to build and learn through relationships across generations. Part of this program incorporates regular visits to Grace Plaza Nursing Home and the Great Neck Senior Center. Toddlers, preschoolers and school age children sing, dance, engage in arts and craft activities, luncheons and other cele-

brations. These programs are made possible through legislative grants.

CLASP actively participates in the Foster Grandparent Program with Nassau County. We are lucky to have Miss Olivia and Miss Eusebia working in our early childhood program.

Several high school students volun-

teered to do internships in preschool classrooms and the main office to learn about the field of childcare and working with children.

CLASP parents continue to volunteer around their busy work schedules to go on field trips, help with fundraising, run special activities, sports clinics or serve on our Board of Directors.

## Music Together® Classes

Music Together® has become an integral component of CLASP's Early Childhood Program. Children ages 18 months through 5 years, experience weekly music classes with a trained Music Together instructor. Families receive music collections and song books to take home and parents have an opportunity to participate in several events with their children

throughout the year. Staff training and communication with the teachers is ongoing, incorporating supplementary activities throughout the children's week.

CLASP is proud to be the only licensed Music Together childcare center in the area. This program is partially funded by donations from Community National Bank and Astoria

Federal Savings Bank.



## Community Resources and Field Trips

CLASP prides itself in being an active member of the business community and instills that same message by having the children share in the assets our neighborhoods have to offer. Children and staff benefit from the wonderful resources in and around Great Neck. Thanks to the Town of North Hempstead, Great Neck Park District and Great Neck Library, children were able to participate in field trips to local concerts, parks, libraries and stores.

Special trips were arranged to: performances at York College, Green Meadows Farm, Bronx Zoo, Adven-

tureland, Cradle of Aviation Museum, tennis courts at Great Neck North High School, movies, Barnes & Noble and local business such as Dreamnastics, PETCO, Active Kids, Kiddsmiles, and the Town of North Hempstead Animal Shelter.

Visitors to CLASP included a representative from the Town of North Hempstead in celebration of Earth Day, Dr. Michelle Savelle from Kiddsmiles, A Drumming Celebration, Town of North Hempstead Animal Shelter, Alley Pond Environmental Center, a magician and several local legislators.

We actively seek new trip locations and invite guests to read, do special projects or speak with the children about various topics of interest.



## Annual Fundraising Events

CLASP's Annual Fundraising Dinner was extremely successful this year as we honored Donna Frasco, Vice President of Community National Bank (CNB), as well as the Great Neck Park District Commissioners and their Staff. CLASP's additional fundraising events included an evening at Café Rustica, Barnes & Noble Holiday Gift Wrapping & Book Fair, Prestige,

Original Works, and Mangia Bene.

Both CNB and the Park District have been instrumental in helping to enhance CLASP's enrichment opportunities. Community National Bank has been an active supporter of CLASP since it opened in the Great Neck community and is one of the sponsors of CLASP's music program. The Great Neck Park District has opened its

facilities to CLASP for many years. With their help, CLASP was able to make enrichment classes available to families who would otherwise not be able to participate in what the park district has to offer. A series of clay, tumble, stretch and balance and plaster craft classes were open to our preschool and school age population.

## The Importance of Staff Development

CLASP staff participate in a variety of training sessions in accordance with state mandated guidelines. This year CLASP offered 20 hours of in-service workshops including: Signs and Symptoms of Seizures, OSHA Procedures and Regulations, Mental Health Disorders of Children, CACFP Food Handling, Identifying and Reporting Sexual Abuse, Utilizing Drums

in the Classroom, Everything You Need to Know About Early Childhood Education, Music Together Practice & Theory, Playground Safety, Behavior Management, Anecdotal Record Keeping, Communicating with Parents, Planning Activities and First Aide.

Staff also participated in educational training sessions presented by the Great Neck Manhasset Community

Child Care Partnership and North Shore LIJ Health Systems, Child Care Council of Nassau County, Lakeshore and SUNY Video Conference sessions.





80 Grace Avenue  
Great Neck, NY 11021

Phone: 516-482-8090  
Fax: 516-482-8497  
[www.claspinc.org](http://www.claspinc.org)



*CLASP is a member agency of the Great Neck North New Hyde Park Community Fund*

---

## CLASP Acknowledges the Following Contributing Agencies and Organizations:

- Astoria Federal Savings Bank
- Berman & Sosman, CPA's
- Child Care Council of Nassau County
- Community National Bank
- Grace Plaza Nursing Home
- Great Neck Chamber of Commerce
- Great Neck / Manhasset Community Child Care Partnership
- Great Neck Library
- Great Neck Park District
- Great Neck Public School District
- Great Neck Senior Center
- Hispanic Community of Great Neck
- The Leeds Foundation
- Levitt Foundation
- Lions Club of Great Neck
- National Council of Jewish Women, Lakeville Section
- Open Door Parent Child Caring Center
- Rotary Club of Great Neck
- Town of North Hempstead
- Twin Pines Food Co-op
- United Community Fund of Great Neck and North New Hyde Park
- Village of Great Neck Plaza
- While They're Little
- Whitsons



CLASP Children's Center

---